

INFOCENTERII™

The Point of Entry Information System

▼
Welcome Guests

Promote Safety

▼
Announce Special Events

Communicate To Employees

▼
Update Traffic And Weather Conditions

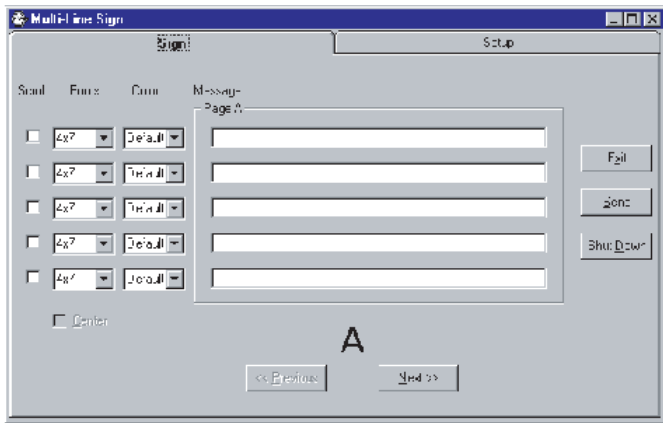
Communicate Any Emergency Information



The INFOCENTERII™ was designed as an exterior, short distance Point Of Entry electronic message information system. They are installed at the entrance of a building or complex to communicate to the entering visitors. Equipped with 3" Ultrabright LED, your message can be clearly visible from up to 150 feet away. And with 4 lines and 24 characters per line, all your current and future events can be displayed at a time.

Unique Features

- ▶ 3" Ultrabright LED Clearly Visible Under Ambient Sunlight
- ▶ Visible From Up To 150 Feet
- ▶ Displays Up To 96 Characters Per Page
- ▶ Aluminum, Rust Proof, And Weatherproof Casing
- ▶ User Friendly Software
- ▶ Virtually Maintenance Free For 10 Years
- ▶ Consumes Less Than 200 Watts Of Power
- ▶ Front Or Back Service



Applications

- ▶ Welcome Guests
- ▶ Promote Safety
- ▶ Announce Special Events
- ▶ Communicate To Employees
- ▶ Update Traffic and Weather
- ▶ Emergency Information

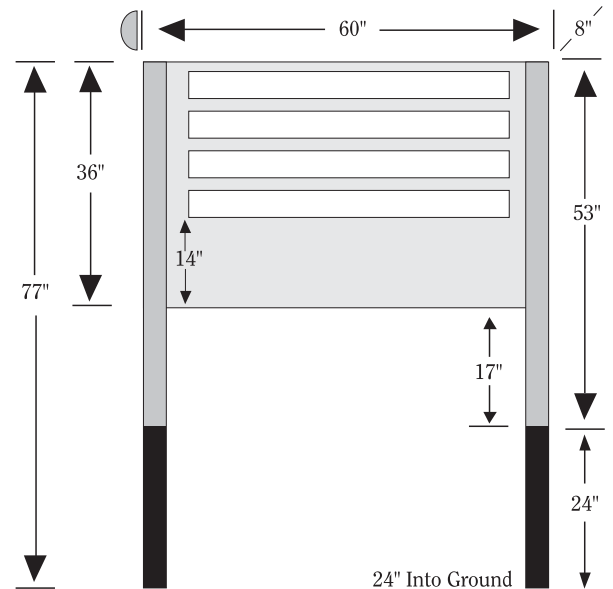
WYSIWYG User Friendly Software

Housing

The housing is completely weatherproof, and comes standard in Pro-Lite charcoal color. The precision crafted lightweight aluminum case with 3" rounded corners is the center of the design. There is a built-in cooling system with two 120V Cooling Fans. The INFOCENTERII™ can be installed within one hour by two persons.

General Specifications

Model No.	: PL-IC4-3024
Lighting Element	: Ultra Bright Red LED
Brightness	: 3000MCD
Effective Temp Range	: 5° -145°
Pixel Size	: 5mm
Matrix Per Line	: 7 x 120
Center To Center	: Approx. 0.4285"
Character Height	: 3"
No Of Characters Per Line	: 24
No Of Lines Per Page	: 4
No Of Characters Per Page	: 96
Viewing Angle	: 45°
Effective Viewing Range	: 15' - 150'
Memory Size	: 26 Pages Total, 8K per page
Programmed Via	: PC Only
Direct Connection	: RS232@9600 Baud, RJ11 Jack
Remote Connection	: Modem, E-mail
Weight	: 120 lbs
Recommended Height	: 17" Off the Ground
Power Consumption	: 120V Or 220V @200 Watts (no special electricity required)
Software	: PL-SW4-2024 For Windows 95, NT & Windows98



Package Includes:

- ▶ Sign With Power Cord
- ▶ Software & Manual
- ▶ 100' Cable
- ▶ Two 77" Aluminum Support Poles



www.pro-lite.com

(800) 223-9223

sales@pro-lite.com